



Beaufort County
Public Works
Stormwater Infrastructure
Project Summary

Project Summary: Mint Farm Subdivision Pond

Activity: Routine/Preventive Maintenance

Narrative Description of Project:

Dewatered pond to safe elevation.

Duration: 8/31/15 - 4/13/16

2016-321 / Mint Farm Sub. Pond	Labor Hours	Labor Cost	Equipment Cost	Material Cost	Contractor Cost	Indirect Labor	Total Cost
AUDIT / Audit Project	0.5	\$11.75	\$0.00	\$0.00	\$0.00	\$6.62	\$18.36
DWP / Dewatered Pond	80.0	\$1,817.91	\$158.54	\$76.80	\$0.00	\$1,161.73	\$3,214.98
HAUL / Hauling	15.0	\$324.96	\$22.40	\$10.40	\$0.00	\$206.55	\$564.31
ONJV / Onsite Job Visit	10.0	\$362.34	\$35.64	\$19.80	\$0.00	\$248.21	\$665.99
PP / Project Preparation	3.0	\$92.25	\$10.62	\$1.65	\$0.00	\$54.69	\$159.21
2016-321 / Mint Farm Sub. Pond Sub Total	108.5	\$2,609.21	\$227.20	\$108.65	\$0.00	\$1,677.80	\$4,622.85
 Grand Total	 108.5	 \$2,609.21	 \$227.20	 \$108.65	 \$0.00	 \$1,677.80	 \$4,622.85

Before

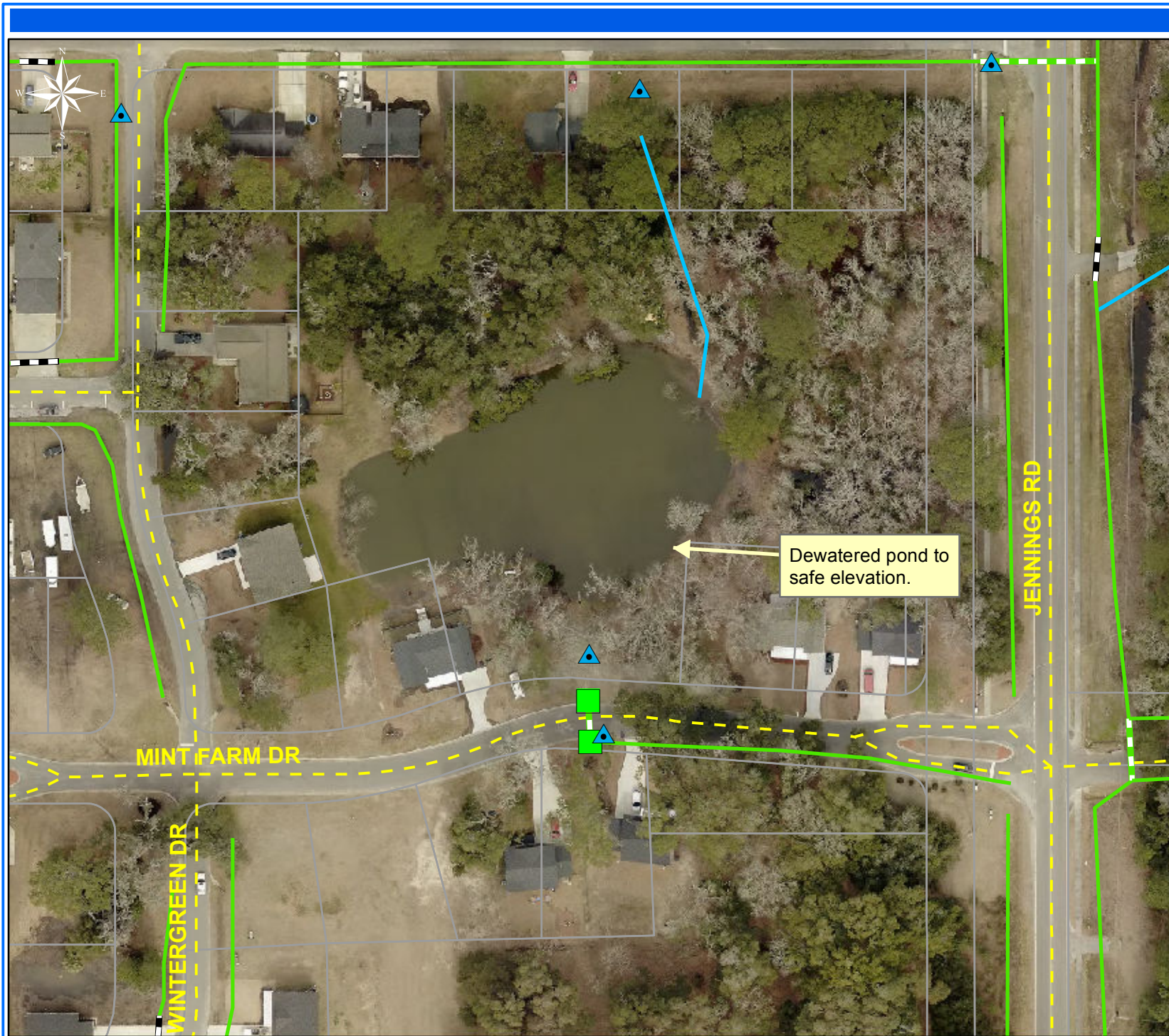


During



After





Project: Mint Farm Subdivision Pond

Activity: Routine/
Preventive
Maintenance

Project #:
2016-321

Township/SW Dist:
Port Royal Island/6

Completed:
April 2016

Legend

Drainage Type

- Access Pipe
- Bleeder Pipe
- Channel Pipe
- Channel
- Stream
- Crossline Pipe
- Driveway Pipe
- Lateral
- Lateral Pipe
- River
- Road Pipe
- Roadside
- Roadside Pipe



1 inch = 96 feet